

St. Asaph Livestock Market

Market Report

Thursday 13th September 2018



St. Asaph Livestock Market
Roe Elwy, St. Asaph, Denbighshire, LL17 0LT

Market Manager – Mr Stephen Morris (Mob – 07836660243)

Tel: 01745 583260

stephen.morris@jonespeckover.com

2427 PRIME LAMBS SOLD
Auctioneer – Mr John Brereton (Mob – 07710900767)

A much better trade on the week with a good demand throughout for both Ram and Ewe Lambs. The best Lambs were especially dear.

Top price Light – 224p/kg shown by D C Evans, Pen y Waen and £84/head shown by M L Thomas, Bryn.

Top price Standard – 250p/kg shown by E Jones, Graig Goch and £100/head shown by the same vendor.

Top price Medium – 192p/kg shown by G O Lloyd & Son, Bryn Goleu and £96/head shown by the same vendors.

Top price Heavy – 194p/kg shown by D G Davies, Tyn y Pistyll and £115/head shown by the same vendor.

SQQ 181.50p/kg

Weight	Average (p/kg)	To (p/kg)	To (£ per head)
Super Super Light			
Super Light			
Light	161.33	209.00	£67.00
Standard	180.36	224.00	£84.00
Medium	183.23	250.00	£100.00
Heavy	179.10	192.00	£96.00
Overweight	172.81	194.00	£115.00

1319 CULL EWES AND RAMS SOLD
Auctioneer – Mr Wvn Morton (Mob – 07866237540)

More Ewes forward were a bit more difficult to sell with best Continental Ewes to £110/head, Welsh Ewes to £40/head and Tups to £80/head.

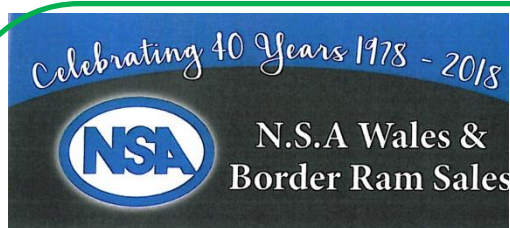
	To (per head)	Average (per head)
Ewes	£110.00	£39.82
Rams	£60.00	£42.50

FORTHCOMING SALES

- **Saturday 15th September 2018 (commencing at 11am)**
Store Lambs and Ewes.
- **Thursday 20th September 2018 (commencing at 10.30am)**
All classes of Prime Stock together with cull Ewes and Rams.
- **Saturday 22nd September 2018 (commencing at 11am)**
Store Lambs and Ewes.
Sale of Lowland Ewe Lambs Suitable for Breeding (commencing at 12 noon) - Entries to date include 90 Texel X Welsh Mules, 30 Suffolk, 40 Suffolk X Mules, 25 Aberdale X Beulah, 80 Texel X Beulah, 45 Texel, 225 Welsh Mules and 65 strong Welsh yearlings – Further entries invited.

Sale of Multi Breed Rams - Entries to date include 6 Beltex X Texel yearlings, 2 North Country Cheviot yearlings and 6 Texel yearlings– Further entries invited.

- **Thursday 27th September 2018 (commencing at 10.30am)**
All classes of Prime Stock together with cull Ewes and Rams.
- **Saturday 29th September 2018 (commencing at 11am)**
Store Lambs and Ewes.
Sale of Farm Machinery, Implements and Tools (commencing at 1pm) – Entries to date include – Ford 4610 4 Wheel Drive Tractor with loader and a 45ft curtain sided triaxle trailer with MOT – Further entries invited.
- **Thursday 4th October 2018 (commencing at 10.30am)**
All classes of Prime Stock together with cull Ewes and Rams.
- **Saturday 6th October 2018 (commencing at 11am)**
Store Lambs and Ewes.
- **Thursday 11th October 2018 (commencing at 10.30am)**
All classes of Prime Stock together with cull Ewes and Rams.
- **Saturday 13th October 2018 (commencing at 11am)**
Store Lambs and Ewes.
- **Thursday 18th October 2018 (commencing at 10.30am)**
All classes of Prime Stock together with cull Ewes and Rams.
- **Saturday 20th October 2018 (commencing at 11am)**
Store Lambs and Ewes.
- **Thursday 25th October 2018 (commencing at 10.30am)**
All classes of Prime Stock together with cull Ewes and Rams.



Monday 17th September 2018

5153 Rams & females

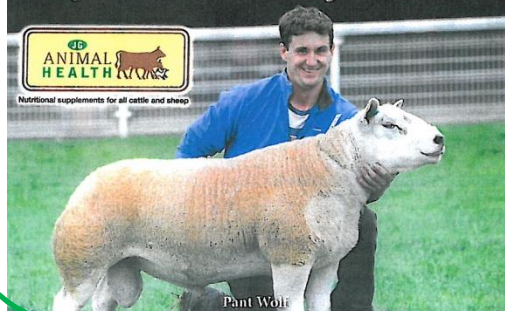
Rings 1 & 2 Blueface & Ring 13 Texel Lambs

Selling commences 10.00am

Rings 3-21 from 10.30am



Non-rational supplements for all cattle and sheep



**NSA WALES & BORDER
MAIN RAM SALE**

at BUILTH WELLS

on Monday 17th September 2018

Please note start of sale Ring 2 at 10am

Entries include:

216 Blue Faced Leicester – Ring 2 at 10am
(7 aged rams, 142 yearlings, 43 ram lambs,
16 yearling ewes and 8 ewe lambs)

10 Crossbred Beltex yearlings – Ring 9 at
10.30am

4 Derbyshire Gritstone – Ring 19 at 10.30am

FOR SALE – FIVE PEDIGREE SIMMENTAL BULLS



All five bulls are March 2016 born with only 24 days difference in age
All TB tested on the 01/06/18
All had boosters for Lepto, BVD, IBR and Bravoxin 10
All had their feet examined and all recently wormed with Closamectin.
Please contact Gabriel Martinez on 01948 770408 or 07714089001

FREE PROFESSIONAL ADVICE AT ST ASAPH LIVESTOCK MARKET

If you require any professional advice whilst at St Asaph Livestock Market on a Thursday, then please visit Rosie Wilson MSc, MRICS, FAAV at our portacabin, which is situated near the main office, between 10:30am and 12:30pm. Rosie provides free preliminary professional advice during this timeframe. If you would like to book an appointment in advance then please contact Rosie on 01745 812127 or 07824 017804

NATIONAL GRID – NORTH WALES CONNECTION PROJECT

Are you being affected by the National Grid – North Wales Connection Project?
If so, please contact Sion Wyn Jones at our Menai Bridge office who can represent you from now until the end of the project



Have you been offered the opportunity to purchase your holding?

As AMC Agents, we can provide you with tailored funding to support most rural business activities. You'll benefit from simple, flexible and affordable lending to support your consolidation, growth or diversification plans.

AMC have more than 85 years' experience lending to the agricultural sector, specialising in long-term mortgages and loans for farms and rural businesses. It means they understand the challenges and opportunities impacting you and the whole agricultural sector.

As an AMC Agent we have helped our clients find tailored and competitive agricultural loans through our relationship with AMC. We can provide expert guidance on your financial needs and a quick decision. To discuss the options of borrowing from AMC and how they could assist you please call Rosie Wilson on 01745 812127 or 07824 017804 in confidence or email

rwilson@jonespeckover.com

OUR PROFESSIONAL TEAM'S CONTACT DETAILS

Colin Brereton BSc, MRICS (Partner) – Wrexham office

Tel: 01978 364283 Mob: 07771516601

e-m: colinbrereton@jonespeckover.com

Thomas Andrew Daulby BSc, MRICS, FNAEA, FICBA (Partner) – Abergele office

Tel: 01745 832240 Mob: 07887790634

e-m: tomdaulby@jonespeckover.com

Sion Wyn Jones BSc, MRICS (Partner) – Menai Bridge office

Tel: 01248 362524 Mob: 07872198274

e-m: swjones@jonespeckover.com

Matthew Karl Holmberg BSc, MRICS (Partner) – Denbigh office

Tel: 01745 812127 Mob: 07771667332

e-m: mholmberg@jonespeckover.com

David Holmes – Menai Bridge office

Tel: 01248 362524 Mob: 07747110560

e-m: menaibridge@jonespeckover.com

Alice Lovegrove-Jones BA (Hons), MRICS – Denbigh office

Tel: 01745 812127 Mob: 07787258185

e-m: alice@jonespeckover.com

Rosie Wilson MSc, MRICS, FAAV – Denbigh office

Tel: 01745 812127 Mob: 07824017804

e-m: rwilson@jonespeckover.com